

2006 BROWNING / PROSTEEL SAFES

PLATINUM® PLUS



- Heavy 3/16" steel body
- Extra-tall, 72" high model
- 22 chromed 1 1/4" diameter locking bolts



PP47F

Available Colors:



MODEL (NUMBER INDICATES CUBIC FEET):

GOLD®



- Extra Wide safe for even greater long gun capacity
- Additional Uni-Force™ cam and door bolts
- Drill-resistant deflector plate
- Embroidered Buckmark on inside door panel
- 1200° F/90 min. fire protection



G47F



G39F



G28F

Available Colors:



MODEL (NUMBER INDICATES CUBIC FEET):

MEDALLION®



- Heavy, 10-gauge steel body
- 1 1/4" diameter chromed locking bolts
- Deluxe five-spoke, gold-plated handle
- 1200° F/60 min. fire protection
- Duo-Plus™ Interior standard



M39F



M28F



M19F

Available Colors:



MODEL (NUMBER INDICATES CUBIC FEET):

FABRIQUE NATIONALE (FN)



- 1200° F/60 min. fire protection
- Three-spoke, gold-plated handle
- Fabrique Nationale graphics package
- Full-Line & Medallion dealer exclusive



FN39F



FN28F

Available Colors:



MODEL (NUMBER INDICATES CUBIC FEET):

STERLING®



- Extra-tall, 72" model available
- Massive 1 3/16" Duo-Formed® door
- OmniBarrier® and Uni-Force™ create a rugged, protected locking system
- S27CF and S23CF are corner models



S47F

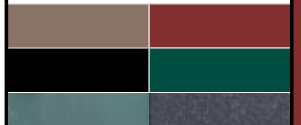


S39F



S26F

Available Colors:



S19F



S27CF



S23CF

MODEL (NUMBER INDICATES CUBIC FEET):

COPPER™



- 1200° F/45 min. Omega Point® listed fire protection
- Attractive wildlife scene available
- Multiple gloss and textured color options



C41F



C34F



C26F

Available Colors:



MODEL (NUMBER INDICATES CUBIC FEET):

BRONZE®



- 1200° F/30 min. Omega Point® listed fire protection
- Available in Browning/ProSteel's premium gloss or handsome textured charcoal finishes
- New Force Deflector™ Locking Mechanism
- 1" formed door



BR34F



BR24F



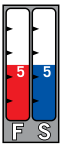
BR16F

Available Colors:



MODEL (NUMBER INDICATES CUBIC FEET):

THEFTGARD®



- Great value and consumer appeal
- 1200° F/30 min. fire protection
- Reinforced U-channel steel door frame protects against prying and pounding



TG23F



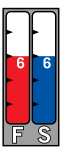
TG15F

Available Colors:



MODEL (NUMBER INDICATES CUBIC FEET):

COMPACT™



- Perfect size safe for small valuables and handguns
- 1" formed steel door
- Electronic lock
- Five-spoke handle



H9F

Available Colors:



MODEL (NUMBER INDICATES CUBIC FEET):

SEE WORKBOOK FOR CONSERVATION SERIES, FINE ART SERIES AND NRA EDITION.